



**THE DIRTY MITTEN**  
**DIRTFEST WEEKEND 2023**  
GRAVEL BIKE RACE • GRAVEL TRIATHLON  
SEPT 23+24, 2023

presented by

**biked.**

**GRAVEL BIKE RACE**  
**SATURDAY 9.23.23**

**GRAVEL TRIATHLON**  
**SUNDAY 9.24.23**



A **TRISA HEALTH** GRAVEL EVENT



# biked.

Hassle free  
biked repair.



[biked.app](https://www.biked.app)



# WELCOME TO THE DIRTY MITTEN 2023

## FROM THE DIRTY DIRECTORS

We would like to welcome you all back to The Dirty Mitten "Dirtfest Weekend", presented by Biked. Dirtfest Weekend features two-days of gravel, with the second-annual The Dirty Mitten Gravel Bike Race on Saturday, September 23rd and the third-annual The Dirty Mitten Gravel Triathlon on Sunday, September 24th. In addition to being part of the USA Triathlon 2023 Gravel Tri Series, we are thrilled to host the second-annual Gravel Triathlon World Championship of the Universe (YES, it's a real thing even if we made it up)!

We would like to take a moment and thank our many sponsors: Biked, Pepsi, Gatorade, PT SportsPro, Total Truck Transport, GU, YMCA, Wolf Kubota, Stellafly, Stuart Coaching, Gordon Water, and others. We would also like to thank our many volunteers, who are vital to holding events like ours.

Finally, thank YOU, our athletes. This event simply would not be what it is without your support of this crazy idea brought to life.

John Mosey & Jon Conkling  
Dirty Directors, The Dirty Mitten



## TABLE OF CONTENTS

Page 3	Welcome	Page 16	Special Event Info
Page 5	Race Weekend Schedule/Timing	Page 18	Gravel Tri Overview Map
Page 7	Gravel Bike Info/Awards/Parking	Page 19	Gravel Tri Swim
Page 8-10	Gravel Bike Courses	Page 20-22	Gravel Tri Bike
Page 11	Free Photos	Page 23	Gravel Tri Run
Page 13	USAT Welcome Letter		
Page 14	Gravel Tri World Championship		
Page 15	Gravel Tri Info/Schedule/Awards		





# ZERO SUGAR. DONE RIGHT.

## THAT'S WHAT I LIKE®

PEPSI, the Pepsi Globe, THAT'S WHAT I LIKE and ZERO SUGAR, DONE RIGHT, are trademarks of PepsiCo, Inc. 25449000

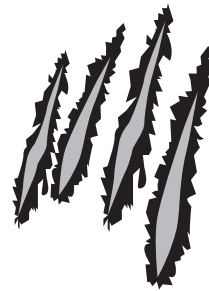
PICKLEPOWER.COM

### PICKLE JUICE®



- only product scientifically proven to stop muscle cramps
- 10x the electrolytes as other sports drinks
- USDA Organic
- No Sugar, No Caffeine, No Artificial Ingredients

**STOP MUSCLE CRAMPS™**



# Wolf Kubota

Supplying all of the RTVs on the course.

Visit [wolfkubota.com](http://wolfkubota.com)



**A HEALTHIER  
COMMUNITY**  
TOGETHER WE CAN DO MORE.

**Join Today**



## GRAB LIFE BY THE HANDFUL.

Better pack another bag. With energy that's this gentle on your stomach, the gluten-free life is too tasty to keep to yourself.





# RACE WEEKEND SCHEDULE

## THURSDAY, SEPTEMBER 21

4 PM – 7 PM – Packet Pick-up for Gravel Race & Gravel Triathlon at Biked Grand Rapids (3534 Roger B Chaffee Memorial Blvd SE, Kentwood, MI 49548)

## SATURDAY, SEPTEMBER 23 - GRAVEL BIKE RACE

8:00 AM – 9:45 AM – Packet Pick-up for Gravel Race @ Camp Manitoulin

10:00 AM – Long Gravel Race (50 Mile) Start

10:15 AM – Short Gravel Race (28 Mile) Start

10:30 AM – 10 Mile Gravel Race Start

3:00 PM - Race End

## SUNDAY, SEPTEMBER 24 - GRAVEL TRIATHLON

6:00 AM – 8:15 AM – Packet Pick-up for Triathlon @ Camp Manitoulin

6:00 AM – Transition Opens

7:45 AM – Transition Closes (The Half Crazy/The Long One)

8:45 AM – Transition Closes (The Shorty)

8:00 AM – The Half Crazy Swim Start

8:30 AM – The Long One Swim Start

9:00 AM – The Shorty Swim Start

## COURSE CUT-OFFS

### SATURDAY GRAVEL BIKE RACE

3:00 PM – Bike Course Cut-off

### SUNDAY GRAVEL TRIATHLON - applies to all events

9:30 AM – Swim Course Cut-off

2:30 PM – Bike Course Cut-off

6:00 PM – Run Course Cut-off

## BODY MARKING - GRAVEL TRIATHLON

**Markers will be available onsite or you can mark yourself at home.**

**PLEASE NOTE:** This schedule is tentative and subject to change prior to race.

**COURSE CUT-OFF TIMES:** We will strictly adhere to all cut-off times due availability of medical support. If you do not arrive at the designated cut-off within the time allowed, you will be removed from the course. Cut-off times apply to all distances.

## TIMING WITH SPORTSTATS

Spectators can track their athletes in real-time during the event by using the SportStats Tracker app available in the app store. This app will allow spectators to see approximately where on the course the athlete is and get alerts as they cross from any given discipline into the transition area. Visit [sportstats.us](http://sportstats.us) to find your results online. All results are subject to penalties from USAT officials. For questions regarding your results, go to [www.sportstats.us](http://www.sportstats.us) and submit an inquiry through their contact link at the bottom of the page. Athletes will be financially responsible for any unreturned chips.

Return timing chips not left at the finish line to:  
SportStats USA, 112 54th St. SW, Grand Rapids, MI 49548.





SATURDAY

# GRAVEL BIKE RACE

10 MILE 28 MILE 50 MILE





# GRAVEL BIKE RACE INFORMATION

## RACE DAY SCHEDULE - SATURDAY, SEPTEMBER 23

8:00 AM – 9:45 AM – Packet Pick-up for Gravel Race @ Camp Manitoulin

10:00 AM – Long Gravel Race (50 Mile) Start

10:15 AM – Short Gravel Race (28 Mile) Start

10:30 AM – 10 Mile Gravel Race Start

3:00 PM - Race End

## AWARDS

12:00 PM – 10 Mile Awards

12:30 PM – Short (28 Mile)

1:30 PM – Long (50 Mile)

\*Times are approximate and may be tweaked as riders come in and when.

### Overall Awards:

Awards will be given to the overall top 3 finishers male and female for all distances. *\*We will hold an awards ceremony for each distance listed above.*

### Age Group Awards:

Awards will be given to the 1st, 2nd, and 3rd place male/female finishers of the Short & Long events in each of the following age group: 19 & Under, 20-29, 30-39, 40-49, 50-59, 60-69, 70-79, 80+. *\*We will NOT be holding an awards ceremony for age group awards. Awards will be available for pick up at the awards tent.*

## PARKING

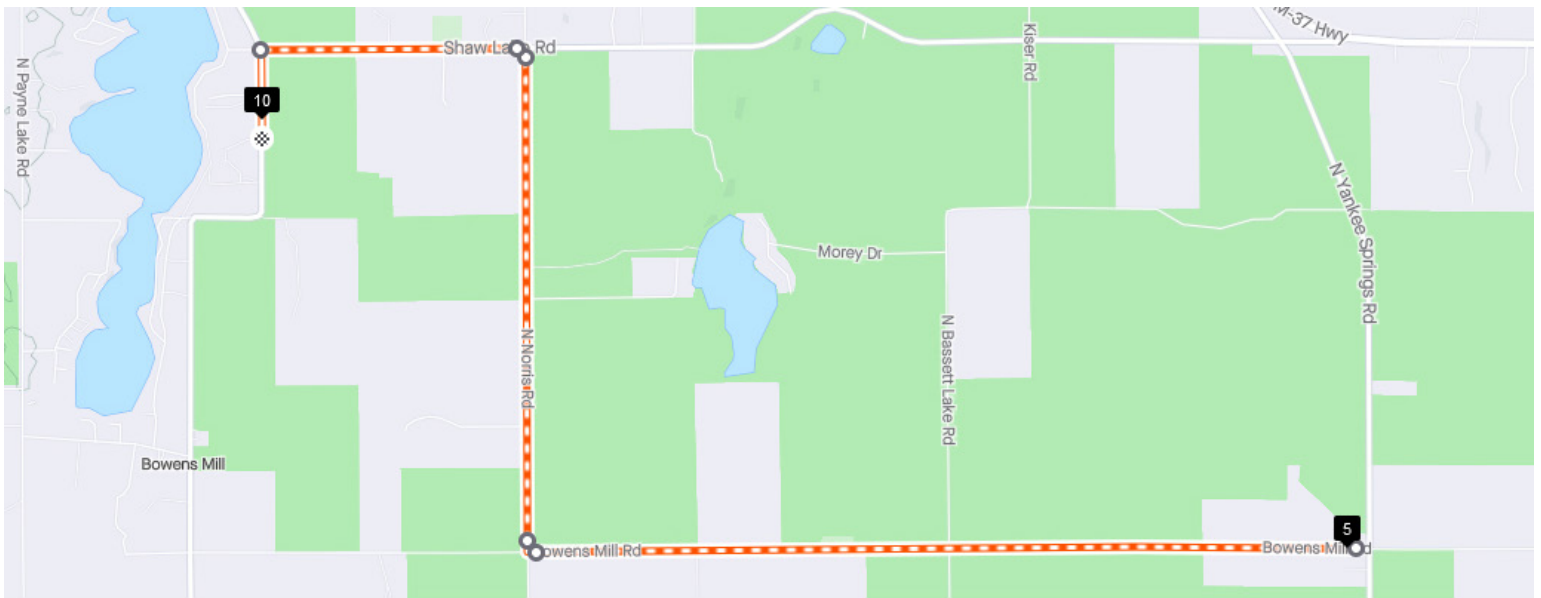
We have two parking areas off of Briggs Road. Please refer to the map below. There will be signs and people directing vehicles for parking. **\*There is no parking in the main camp entrance.**





# THE 10 MILER COURSE

Great for new gravel riders or anyone looking to see what gravel is all about. The out-and-back course starts at the camp and goes EAST. At 5 miles you will turnaround and return to the camp. **There are NO AID STATIONS on The 10 Miler due to the short nature of the distance.**



**BIKE SUPPORT PROVIDED BY**

**biked.**

**BIKE CARE MADE EASY.**

biked. saves you time and energy by picking up your bike wherever it is, servicing it at our world class shop, and delivering it back to your doorstep. All of the ease, none of the grease.

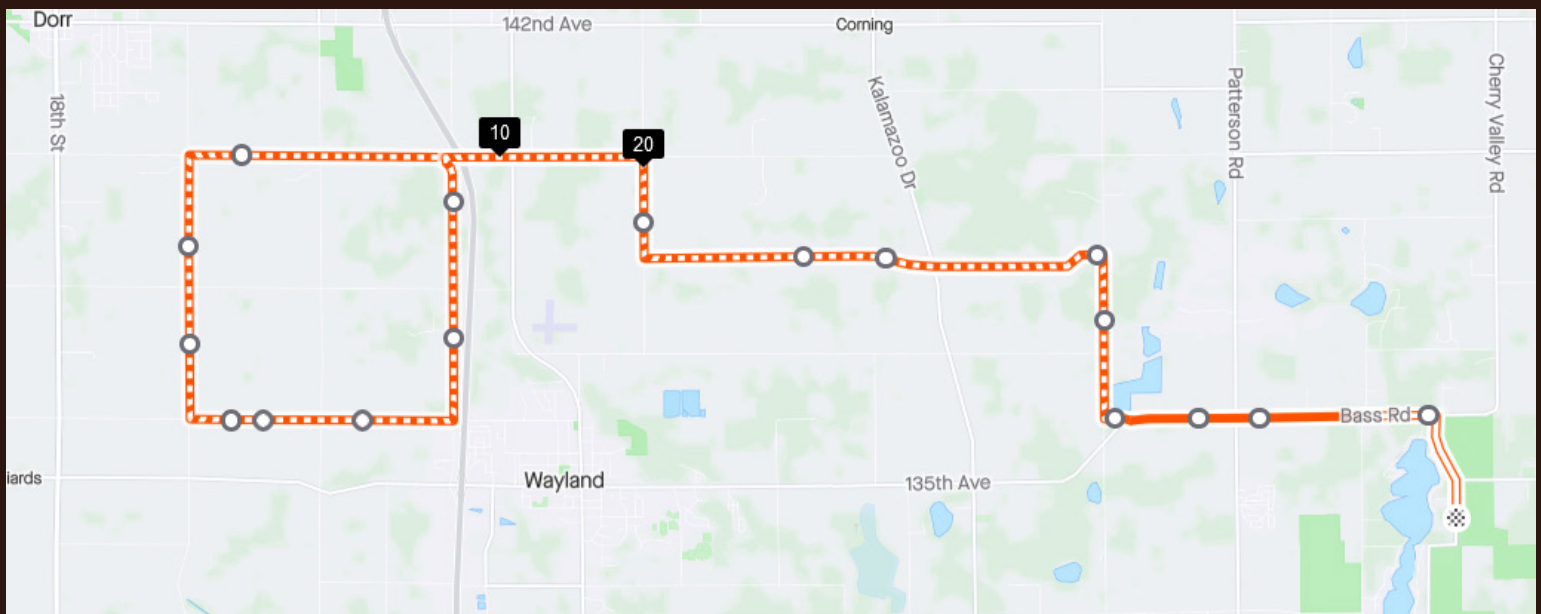
Learn more at [biked.app](https://biked.app)

**BE AWARE: THIS IS AN OPEN BIKE COURSE!**  
**THIS MEANS THERE WILL BE AUTOMOBILES ON THE COURSE!**



# THE SHORT 28 MILE COURSE

This lollipop route goes WEST of the camp and is a great ride for beginner riders or anyone looking for a decent challenge but not ready for the long course yet. **There is ONE AID STATION on this course.**



**WEST MICHIGAN  
SPORTS COMMISSION**

PROUD SUPPORTER OF **TRIS 4 HEALTH**  
FOR OVER **10 YEARS!**

 **STUARTCOACHING**

**PUSH  
PAST  
YOUR  
LIMITS.**

[STUARTCOACHING.COM](http://STUARTCOACHING.COM)



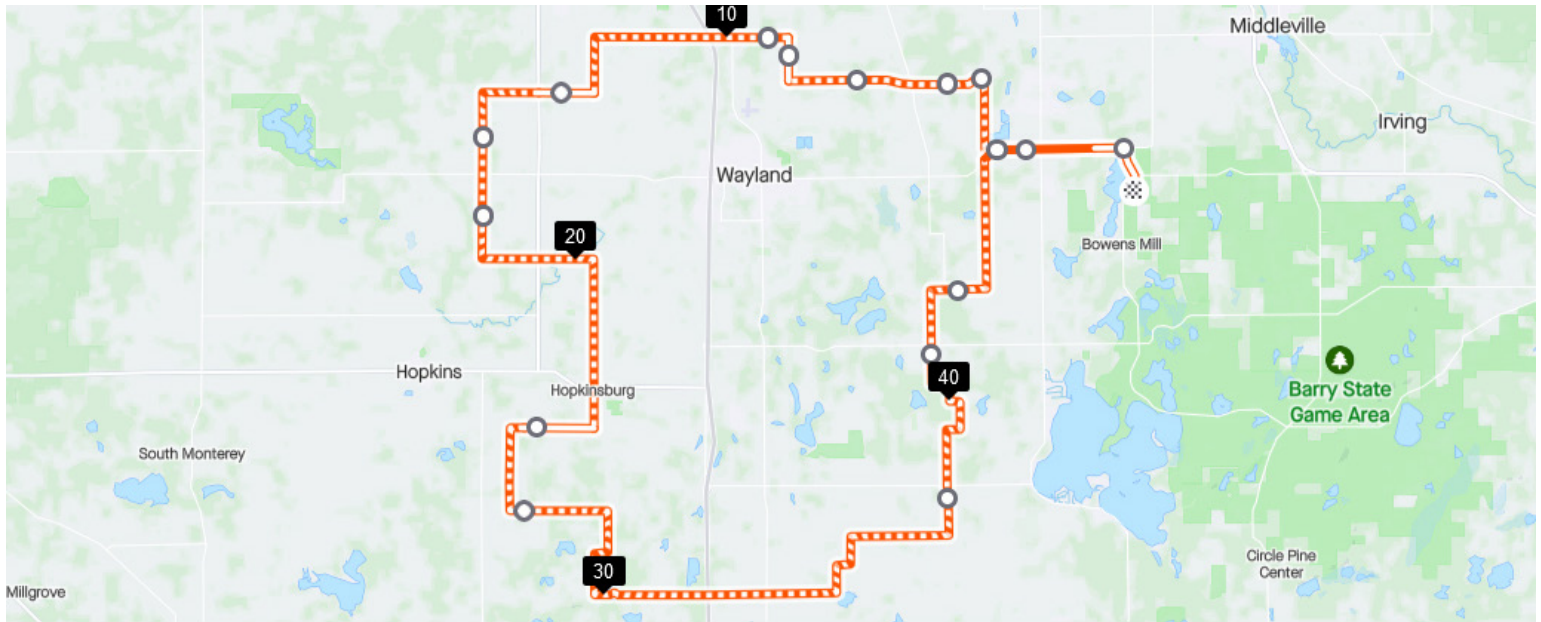
**BE AWARE: THIS IS AN OPEN BIKE COURSE!**  
**THIS MEANS THERE WILL BE AUTOMOBILES ON THE COURSE!**



# THE LONG 50 MILE COURSE

This longer loop route goes WEST and SOUTH of the camp and is perfect for riders looking for more of a challenge.

There are **TWO AID STATIONS** on this course.



## IMPORTANT BIKE COURSE INFORMATION

- It is the bikers' responsibility to stay to the right and ride single-file on or as close to the shoulder as possible.
- When turning, please be aware of your surroundings and look behind you before entering the turn. Sheriffs will be positioned at major intersections.
- Obey all traffic laws unless instructed to proceed by a sheriff.
- Be Green! Please keep trash on your bike or drop it in the appropriate drop zones.
- Athletes are expected to be self-supportive on the bike course. We do offer bike SAG support, but please understand that we have a large course and it may take time to get to you.
- **IF YOU NEED BIKE SUPPORT OR ASSISTANCE, PLEASE TRY TEXTING 616-551-7385 or 616-292-0728. Please note cell service can be spotty on course.**

**BE AWARE: THIS IS AN OPEN BIKE COURSE!**  
**THIS MEANS THERE WILL BE AUTOMOBILES ON THE COURSE!**



# FREE RACE PHOTOS

Whether you are doing the gravel bike race, the gravel triathlon, or BOTH, we are pleased to once again provide FREE race photos at The Dirty Mitten! Look for Stellafly photographers out there and make sure to smile when you see them!



**DON'T FORGET TO SMILE WHEN YOU SEE  
STELLAFLY PHOTOGRAPHERS ON COURSE!**



SUNDAY

# GRAVEL TRIATHLON

SWIM GRAVEL BIKE TRAIL RUN





# USAT GRAVEL TRI SERIES

## FROM VICTORIA BRUMFIELD

Dear Athletes,

I wanted to take a moment to wish you luck in the Dirty Mitten Triathlon! The Dirty Mitten is so much more than a race, it's an opportunity to connect and appreciate everything being a part of our Triathlon community brings.

Whether it's your first race or your fiftieth, I encourage you to take a moment at the start line to embrace the thrill of racing and celebrate the transformative power that triathlon ignites within all of us.

Racing brings out the best in us, it allows us to discover our own resilience. It's not just about finishing, but all the hard work that will get you there.

Good luck in your race this weekend! Have fun, dig deep, and unleash the power of YOU!

Kind regards,

Victoria Brumfield  
CEO, USA Triathlon



Swim, bike and run — on gravel and dirt! Featuring multisport events in each region of the United States, the Gravel Triathlon Series offers endurance sports enthusiasts a new way to experience swim, bike and run. Gravel is the hottest trend on bikes — join the fun and see what gravel is all about at the Gravel Triathlon Series!



# WHAT IS THE GRAVEL TRIATHLON WORLD CHAMPIONSHIP OF THE UNIVERSE?

## THIS IS THE ONLY GRAVEL TRIATHLON WORLD CHAMPIONSHIP

Let's face it - there are not a lot of gravel triathlons around, especially not ones like The Dirty Mitten. However, this little weird offshoot of triathlon is going to grow. So we (John & Jon) asked ourselves, "How can we make this even more special to attract others to try a gravel tri?" The answer: lets make a championship. But not just any championship. We wanted to create something so over-the-top, something that made us chuckle and something that it fit the unique vibe of The Dirty Mitten. That is where the idea was born.

## SO WHAT ARE THE AWARDS?

- The top overall male & female winner of the "Half Crazy" Triathlon will each earn a Championship Heavyweight Belt. These are HEAVY (metal, jewels, engraving) and like no other overall award anywhere.
- The top overall male & female winner of the remaining "Half Crazy" events plus all events of "The Long One" and "Shorty" distances will earn Championship Metal Fist Plates.
- The top three age groupers in each AG will earn hefty Age Group Medals (1st, 2nd, 3rd places).

## WHY SHOULD YOU CARE?

Simple: Don't you want to say you were the first "Gravel Triathlon World Champion of the Universe"?

**ACTUAL GRAVEL TRIATHLON AWARDS**

**CHAMPIONSHIP FIST PLATES**  
HALF CRAZY OVERALL:  
DU, AB - MALE, FEMALE, RELAY TEAM  
THE LONG ONE OVERALL:  
DU, AB - MALE, FEMALE, RELAY TEAM  
THE SHORTY OVERALL:  
DU, AB - MALE, FEMALE, RELAY TEAM

**CHAMPIONSHIP HEAVYWEIGHT BELTS**  
HALF CRAZY OVERALL:  
TRIATHLON - MALE, FEMALE

**AGE GROUP MEDALS**  
HALF CRAZY AGE GROUP:  
TRI, DU, AB, RELAY  
THE LONG ONE AGE GROUP:  
TRI, DU, AB, RELAY  
THE SHORTY AGE GROUP:  
TRI, DU, AB, RELAY

**GRAVEL TRIATHLON WORLD CHAMPIONSHIP OF THE UNIVERSE**



# RACE INFORMATION

## EVENT & ATHLETE BREAKDOWN

EVENT	START TIME	SWIM CAP	BIB/BIKE STICKER
THE HALF CRAZY TRI	8:00 AM	RED	RED
THE HALF CRAZY AQUABIKE	8:00 AM	RED	RED W/ RED STRIPE
THE HALF CRAZY RELAY	8:00 AM	RED	RED W/ YELLOW STRIPE
THE HALF CRAZY DUATHLON	8:00 AM	N/A	RED W/ BROWN STRIPE
THE LONG ONE TRI	8:30 AM	ORANGE	ORANGE
THE LONG ONE AQUABIKE	8:30 AM	ORANGE	ORANGE W/ RED STRIPE
THE LONG ONE RELAY	8:30 AM	ORANGE	ORANGE W/ YELLOW STRIPE
THE LONG ONE DUATHLON	8:30 AM	N/A	ORANGE W/ BROWN STRIPE
THE SHORTY TRI	9:00 AM	WHITE	WHITE
THE SHORTY AQUABIKE	9:00 AM	WHITE	WHITE W/ RED STRIPE
THE SHORTY RELAY	9:00 AM	WHITE	WHITE W/ YELLOW STRIPE
THE SHORTY DUATHLON	9:00 AM	N/A	WHITE W/ BROWN STRIPE

## RACE DAY SCHEDULE - SUNDAY, SEPTEMBER 25

6:00 AM – 8:15 AM – Packet Pick-up for Triathlon @ Camp Manitoulin

6:00 AM – Transition Opens

7:45 AM – Transition Closes (The Half Crazy/The Long One)

8:45 AM – Transition Closes (The Shorty)

8:00 AM – The Half Crazy Swim Start

8:30 AM – The Long One Swim Start

9:00 AM – The Shorty Swim Start

### COURSE CUT-OFFS - applies to all events

9:30 AM – Swim Course Cut-off

2:30 PM – Bike Course Cut-off

6:00 PM – Run Course Cut-off

## AWARDS

11:00 AM – The Shorty Awards      12:00 PM – The Long One      2:30 PM – The Half Crazy

\*Times are approximate and may be tweaked as athletes come in and when.

### OVERALL TRIATHLON WINNERS, EACH DISTANCE

Each triathlon distance will have Overall Awards for the top-three finishers, male and female. The first-place finisher, male and female, will each receive a free entry to the 2024 TDM for the same distance event. *\*We will hold an awards ceremony for each distance listed above.*

### AGE GROUP TRIATHLON WINNERS, EACH DISTANCE

Awards will be given to the 1st, 2nd, and 3rd place male/female finishers of each age group: 19 & Under, 20-24, 25-29, 30-34, 35-39, 40-44, 45-49, 50-54, 55-59, 60-64, 65-69, 70-74, 75+, Clydesdales/Athena 39 & Under, Clydesdales/Athena 40+. Your age is race age (as of 12/31) not your age today. *\*We will NOT be holding an awards ceremony for age group awards. Awards will be available for pick up at the awards tent.*

### AQUABIKE, DUATHLON, RELAY WINNERS, EACH DISTANCE

Awards will be given to the top-three finishers in each distance male/female for aquabike, duathlon and swim only and the top-three teams for relays regardless of the gender make-up of the team. *\*We will hold an awards ceremony for each event listed above.*



# SPECIAL EVENT INFORMATION

## AQUABIKE ATHLETES

The Aquabike course will be the same as the triathlon course for the same-distance race. When you complete the bike portion of your event, **DISMOUNT** at the dismount line. A timing mat at the dismount line will record the finish time of your event. **DO NOT ride your bike across the finish line but you can walk it across.** Riding your bike into the finish line chute and across the finish line will result in disqualification. Please give the right of way to the runners who are heading out, as the timing of your event has already stopped.

## DUATHLON ATHLETES

Duathlon events are in a run/bike/run format. Duathletes will go off in a time trial start from the run-out in transition. Be prepared to be ready 10 minutes prior to your distance's start time with everything you need for the first run portion of your race. Athletes should self-seed according to run speed, faster runners towards the front, slower towards the back. Your first run time will start when you've crossed over the run-out line.

## RELAY TEAMS

- **How does the chip exchange work?** We have a relay chip exchange corral located inside the transition area. The receiving team member waits here for the chip hand-off.
- **Can the other team members be in transition?** Yes. All relay team members must wait in the exchange corral.
- **Is there a separate location for the chip exchange for the swim/bike exchange and the bike/run exchange?** No. All chip exchanges take place in the same chip exchange corral.
- **Can you mix male/female teams?** Yes, our relay teams are mixed and can consist of male/female team members.
- **Can you mix age groups for teams?** Yes, our relay teams are not separated by age group.
- **How are the awards determined?** Awards are given for 1st, 2nd, and 3rd place overall for relays. We do not divide based on age or gender.
- **Do all team members receive a swag bag, t-shirt, and medal?** Yes, each team member is treated like any other athlete except that they share one chip.







**LOVE YOUR WATER EVERYDAY!**



**Gordon**  
WATER SYSTEMS

**PT** SPORTS  
PRO

Physical Therapy ● Personal Training ● Performance Testing

**TREATING YOU LIKE A PRO.**



# GRAVEL TRIATHLON OVERVIEW MAP



## PARKING

We have two parking areas off of Briggs Road. Please refer to the map below. There will be signs and people directing vehicles for parking. **\*There is no parking in the main camp entrance.**

**Please arrive early to ensure you have enough time to get your packet (if necessary) and to setup in transition.**



# THE SWIM COURSE: ALL DISTANCES

## SWIM START

Each distance will have a different cap color. You're required to wear a The Dirty Mitten provided swim cap. Participants will start the swim in a "time-trial start", going into the water in intervals of 5 seconds. We ask that athletes "self-seed" themselves based on their estimated swim time (distance/100m or total swim time for their event). Swim groups will be based on distance.

\*IN KEEPING WITH THE TRADITION SET THE FIRST YEAR, WE WILL BE "EYE BALLING" THE SWIM COURSE BUOYS. THE COURSE WILL BE SOMEWHERE BETWEEN 400-750 METERS. YOU'RE WELCOME IF IT IS SHORT.

## THE SHORTY - ONE LOOP

Clockwise course. **The Shorty swim is ONE LOOP of the course**, starting at the swim start and ending at the swim exit. You will be swimming around the triangle turn buoys on the far side of the course.

## THE LONG ONE - TWO LOOPS

Clockwise course. **The Long One swim is TWO LOOPS of the course**, starting at the swim start, and looping around the triangle turn bouys near shore, starting the second loop and ending at the swim exit.

## THE HALF CRAZY - THREE LOOPS

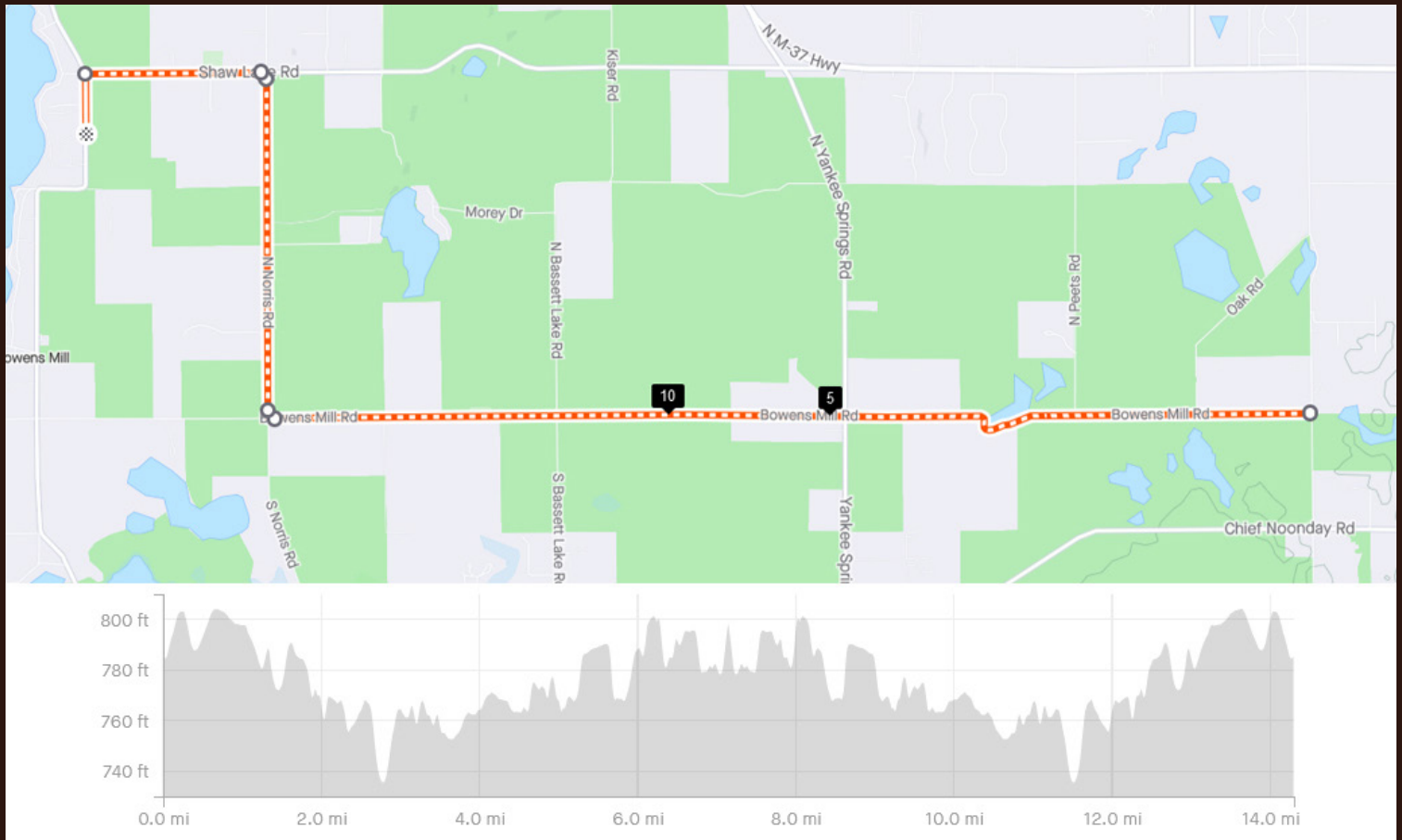
Clockwise course. **The Half Crazy swim is THREE LOOPS of the course**, starting at the swim start, and looping around the triangle turn bouys near shore, starting the second loop and then the third loop and ending at the swim exit.





# THE SHORTY BIKE COURSE

The Shorty is an out-and-back course on Bowens Mills Road. Enjoy the beautiful gravel roads of Barry County on this 14 mile, beginner-friendly course. **There are NO AID STATIONS on The Shorty due to the short nature of the distance.**



BIKE SUPPORT PROVIDED BY

**biked.**

BIKE CARE MADE EASY.

biked. saves you time and energy by picking up your bike wherever it is, servicing it at our world class shop, and delivering it back to your doorstep. All of the ease, none of the grease.

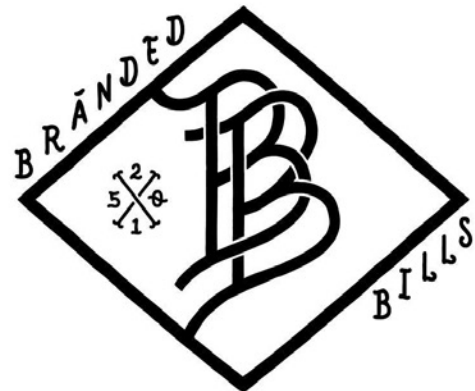
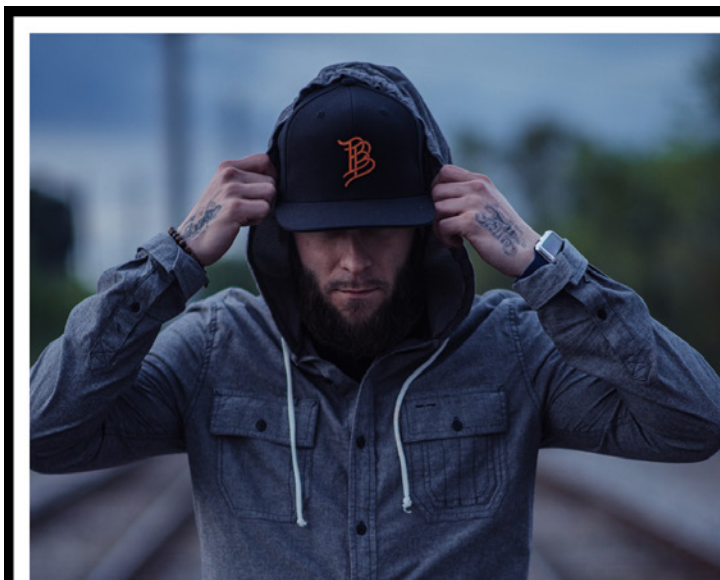
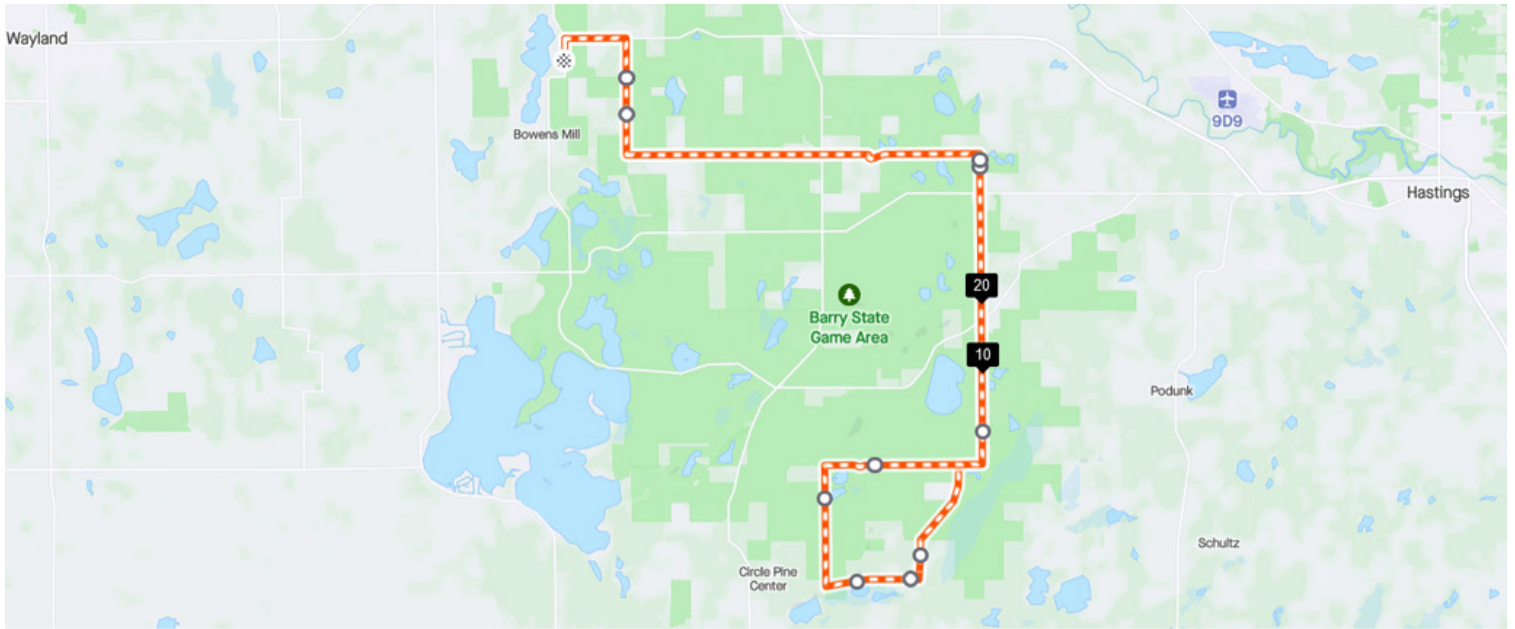
Learn more at [biked.app](http://biked.app)

**BE AWARE: THIS IS AN OPEN BIKE COURSE!**  
**THIS MEANS THERE WILL BE AUTOMOBILES ON THE COURSE!**



# THE LONG ONE BIKE COURSE

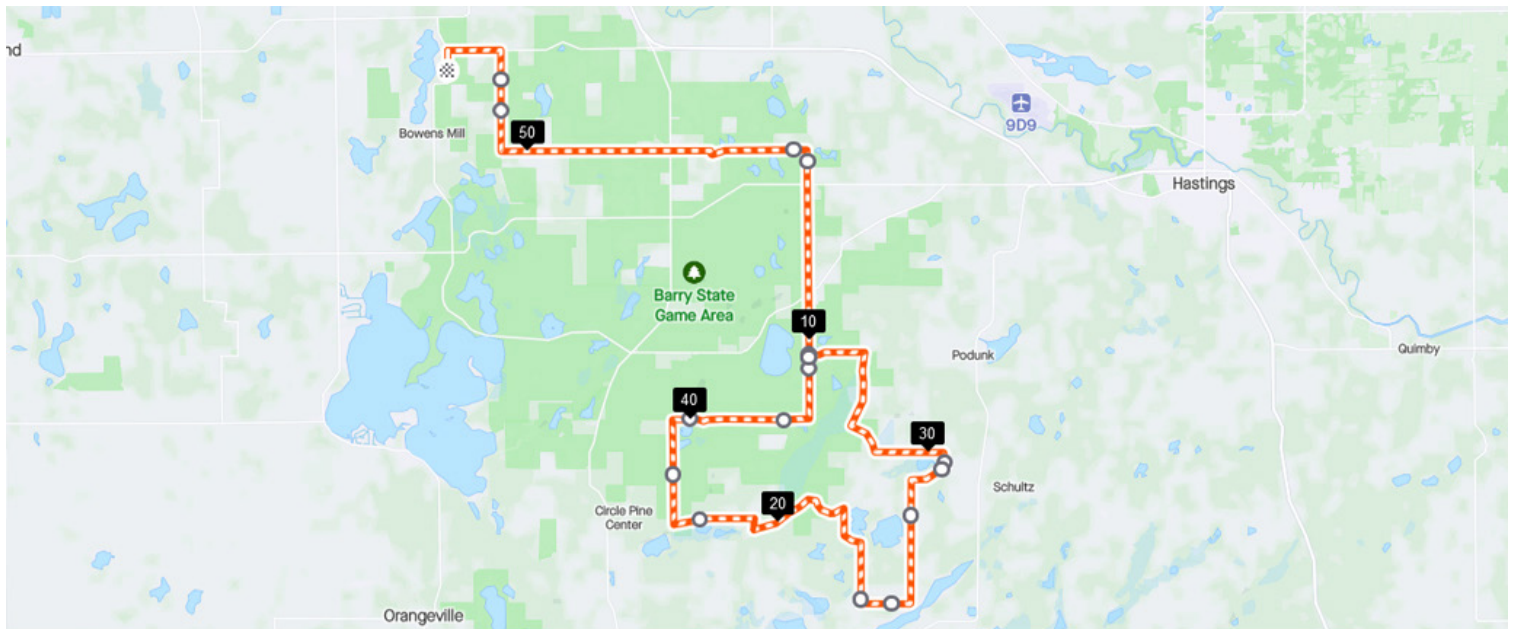
The Long One is a lollipop style course. Once you get beyond Bowens Mills Road, the course will work its way south and east, exploring some of the best gravel roads Michigan has to offer including a challenging section of Sager Road. Test your grit on this 29-ish mile course. **There is ONE AID STATION you will hit twice.**



**THE OFFICIAL HAT OF  
THE DIRTY MITTEN**

# THE HALF CRAZY BIKE COURSE

The Half Crazy is a lollipop style course you will loop twice. Once you get beyond Bowens Mills Road, the course will work its way south and east, exploring some of the best gravel roads Michigan has to offer including a challenging section of Sager Road (twice!!!). Good luck with that. **There is ONE AID STATION you will hit three times.**



The official 2023 print partner of Tris4Health events.



**BE AWARE: THIS IS AN OPEN BIKE COURSE!**  
**THIS MEANS THERE WILL BE AUTOMOBILES ON THE COURSE!**

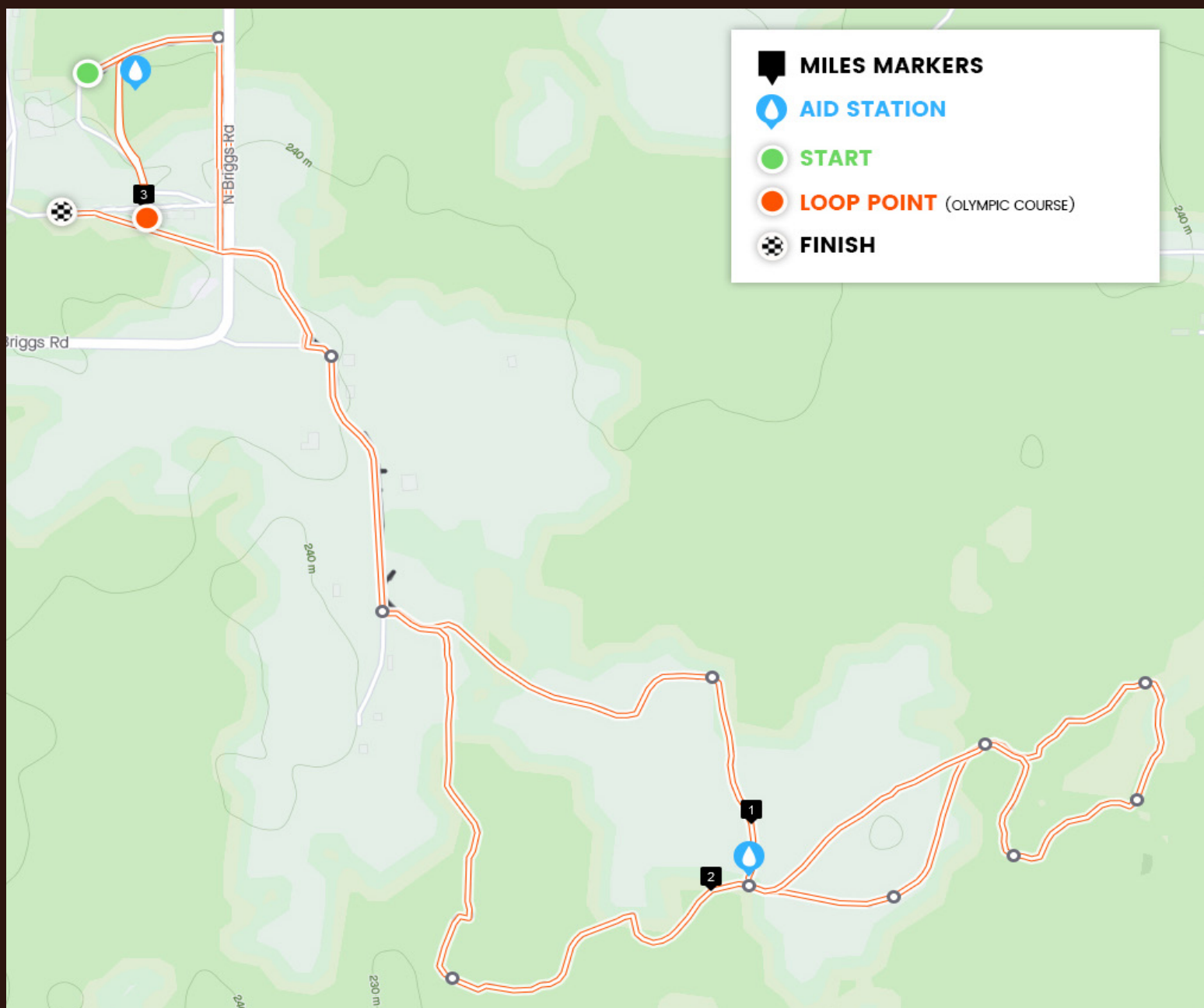


# THE RUN COURSE: ALL DISTANCES

This scenic mix of trail (49%), gravel road (19%), and field (32%) promises the right mix of difficulty and scenery. The Shorty athletes will make one loop (3ish miles) while The Long One athletes will make two loops (6ish miles). The Half Crazy will be four loops consisting of between 12-13ish miles. To begin you will exit transition onto a small trail that turns right and runs along Briggs Road, which you cross. The trail ends at the gravel road that runs along the horse pens and fields and will take you to the camp's back fields.

After making your way along and through the fields you will enter a beautiful half mile stretch of trail that loops back to where you entered the trail. You'll turn left and continue through the field until you come to the next section of trail, again, approximately .5 miles, which takes you back to the gravel road and then the original connector trail where you cross the street and head towards either the finish line or your second loop, depending on your distance.

**There are TWO AID STATIONS - one in transition and one on the course. You will hit them multiple times, which will increase with your distance.**





# TRIS4HEALTH™

MICHIGAN'S PREMIER ENDURANCE EVENTS

**Athlete-focused events:  
we do everything for you but race.**

**TRIATHLON   GRAVEL CYCLING  
GRAVEL TRIATHLON   RUNNING  
ROAD CYCLING**

**GET STARTED AT [TRIS4HEALTH.COM](https://www.tris4health.com)**

